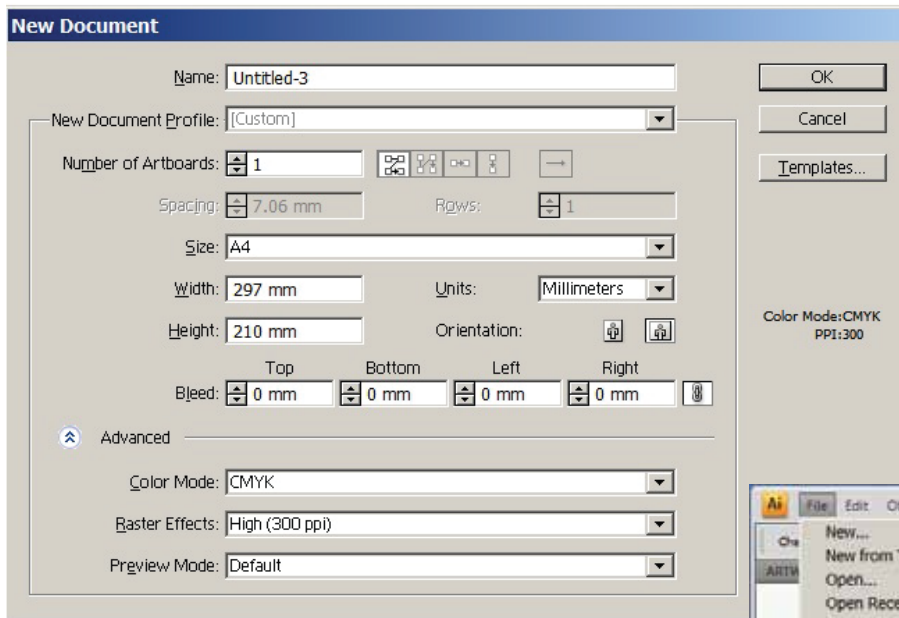


When starting a new job in Illustrator make sure you document is set to CMYK

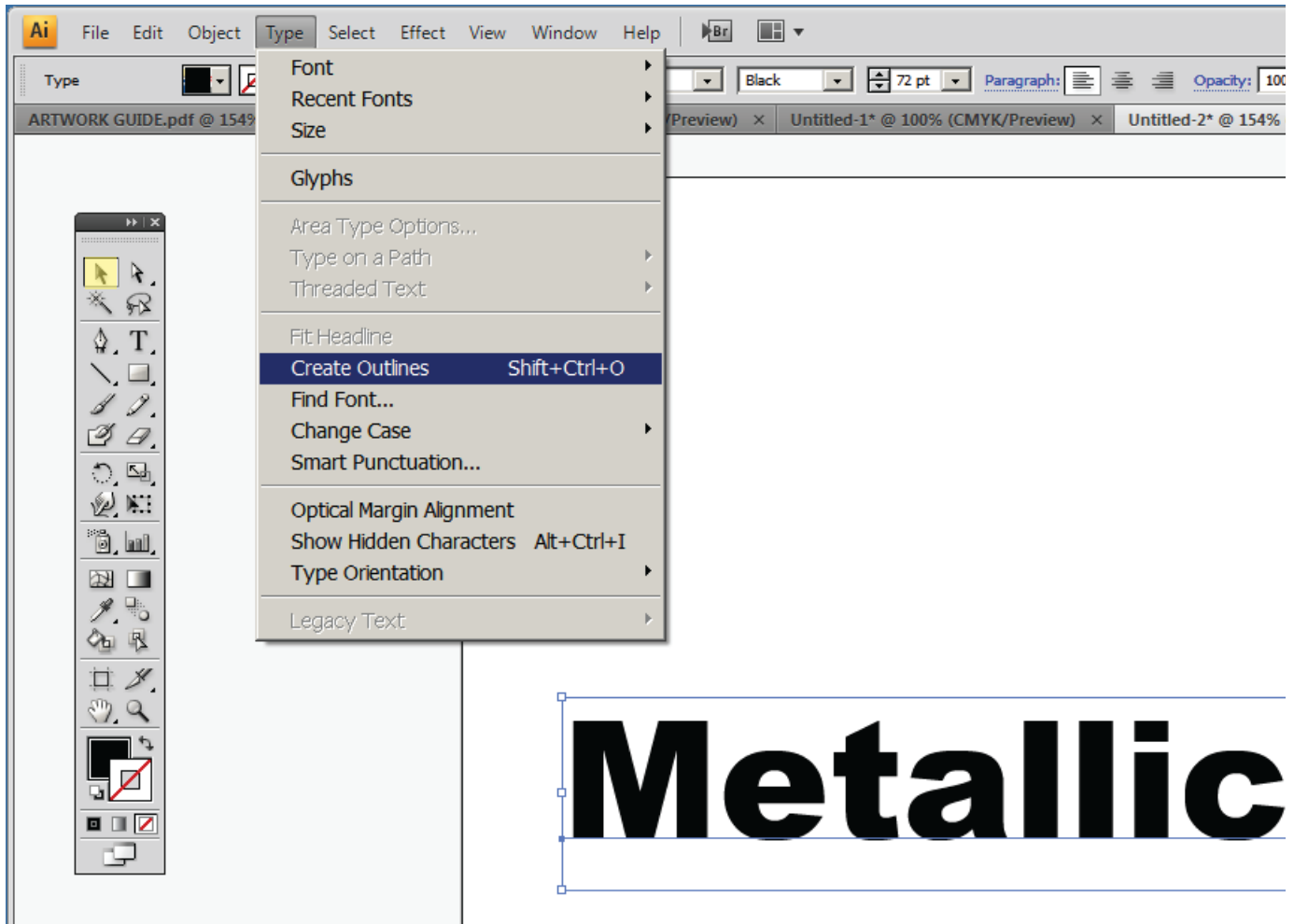


If someone else has sent you the file you can change the settings as shown on right

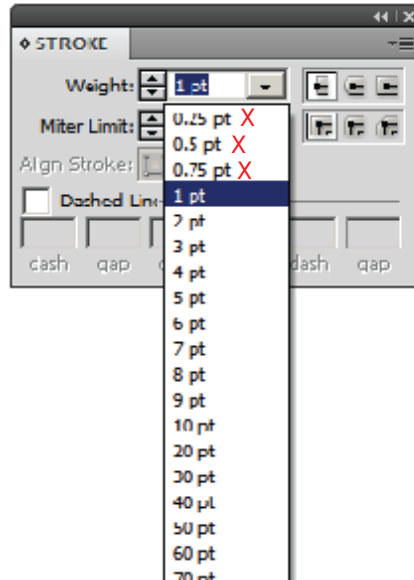
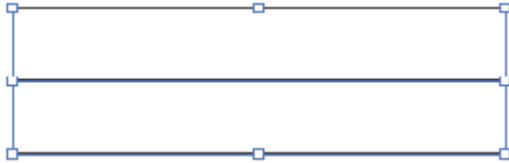


When supplying files please ensure all fonts are turned to outlines.

Select any text typed with the black headed arrow, go to TYPE - CREATE OUTLINES, and thats it!



If drawing lines or boxes, make sure line width is at least 1pt. Thinner lines do not hold in the manufacturing process.



When you are finished creating artwork, simply save as a pdf ( preferred ) eps or ai.  
If saving as pdf make sure you have settings as shown below.

