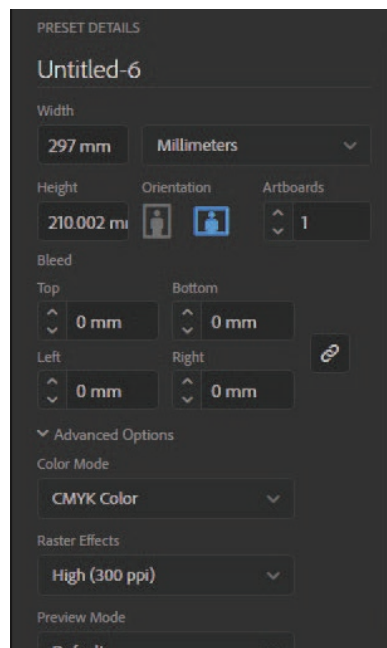


## a guide to preparing artwork in Adobe Illustrator (1)

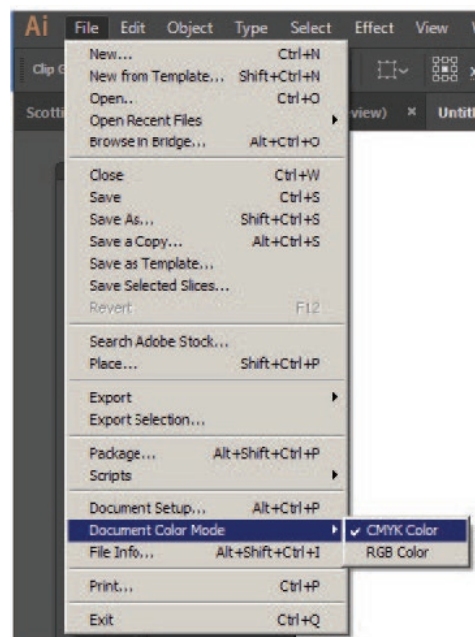
### CHECK 1

When creating your artwork file in Illustrator, make sure the colour mode is set to CMYK.



### CHECK 2

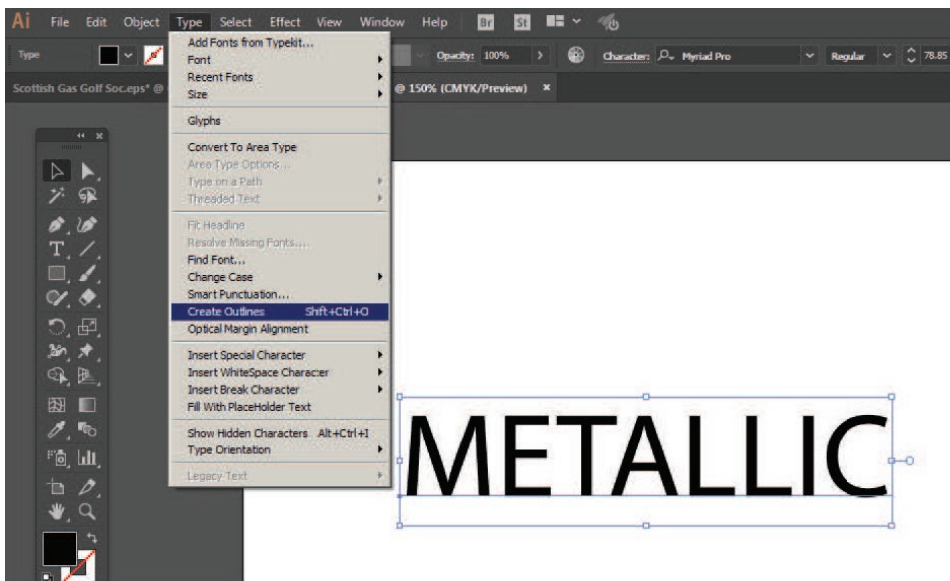
You can check and change the file as shown here:



## artwork in Adobe Illustrator (1)

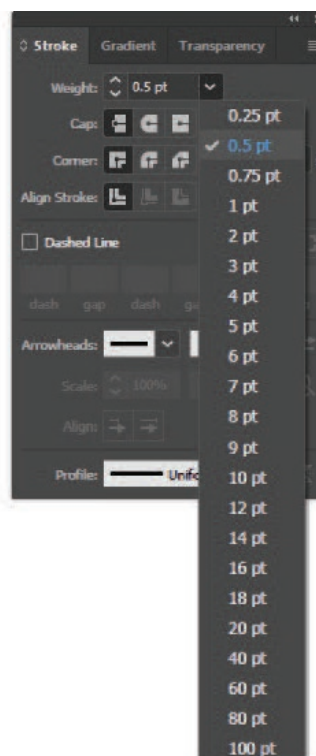
### CHECK 3

When supplying artwork files, please ensure all fonts are turned to outlines.  
To do this, select text - go to TYPE - scroll down to CREATE OUTLINES.



### CHECK 4

Make sure the weight of any lines or boxes is at least 0.5pt.  
Thinner lines do not hold in the manufacturing process.



## artwork in Adobe Illustrator (1)

### CHECK 5

Final artwork should be supplied as a PDF (preferred file type), EPS or AI file. If supplying a PDF, please make sure your file is saved using the settings below:

